

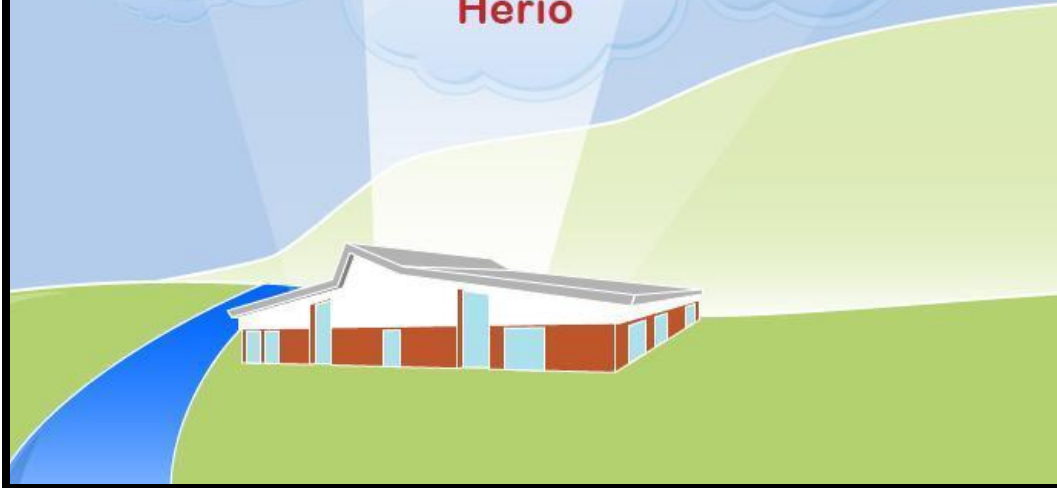
Glanusk

Primary School

Excite
Tanio

Challenge
Herio

Empower
Galluogi



Managing
Behaviour Positively

2023-24

At Glan Usk Primary we use positive behaviour management in order that:

Each child can:

- ✓ Learn effectively
- ✓ Be treated fairly
- ✓ Work and play in a safe environment
- ✓ Work and play without being hindered by others
- ✓ Understand that others have the same rights

Parents can:

- ✓ Know how their child is behaving at school
- ✓ Support and encourage their child to follow our 'REACH Rules'

School can:

- ✓ Make each day a fresh start
- ✓ Give children clear, consistent rules for behaviour in school
- ✓ Make clear the rewards children can expect for following the rules
- ✓ Make clear the consequences of inappropriate behaviour
- ✓ Encourage children to take responsibility for their own behaviour
- ✓ Help children to mature and develop good behaviour

How Can Parents & Carers Help?

Positive behaviour management works best when home and school work together. Poor behaviour can hinder a child's progress and disrupt the progress of other children.

Please reinforce achievement with praise and interest when:

- ✓ Your child tells you about what they have done in school
- ✓ Teachers tell you about good work/behaviour
- ✓ Your child brings home stickers or certificates
- ✓ Your child brings home something he/she has made in school

Please support the school when unacceptable behaviour is reported by:

- ✓ Discussing the situation with your child and talk about the behaviour you expect
- ✓ Reminding your child of the 'Star Rule' and the REACH rules
- ✓ Praising improvement when it is reported to you

Voice Levels

Children are encouraged to use an appropriate voice level for different situations. These are modelled by staff and reinforced regularly.

- Partner voice
- Group voice
- Class voice
- Outside voice

Any incidents of any form of bullying e.g. racism, cyber bullying etc, reported to and dealt with by the Leadership Team are recorded electronically and this information is collected termly by Newport Local Authority.

The School also has an Anti Bullying Policy

Reach for
the Stars!



Star Rule



Listen to and follow instructions first time.



un, dau, tri,
Stopiwch!



Respect



We show respect to everyone and everything.





Engage



We engage in our learning.



Aspire

We aspire to be the best we can be.





Care



We use kind hands, kind feet and
kind words.

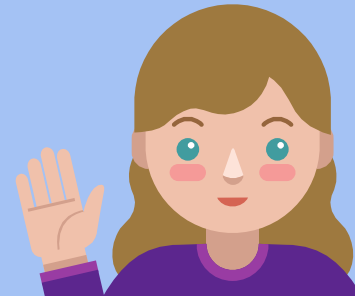




Honest



We are honest and trustworthy.



Respect

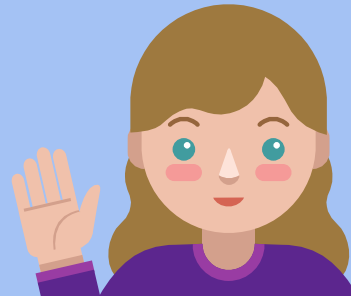
Engage

Aspire

Care

Honest

for the stars!



Possible Rewards

1. Praise for the positive behaviour shown
2. Stickers/Dojo Points
3. Good News Note / Seesaw home
4. Sent to a member of LAST
5. Seren Y Dydd for following REACH rules
6. Seren Yr Wythnos praise in assembly
7. Weekly Golden time for the class



Possible Consequences

1. Reminder of the REACH rules
2. Warning with a quiet conversation about the REACH rule being broken
3. Restorative Conversation or Name recorded with a restorative explanation
4. Time out or removal of breaktime /privileges
5. Reflection Time Y1-Y6
6. Class Teacher to make a phone-call home
7. Sent to a member of LAST
8. On report daily to HT or DHT until behaviour improves
9. Miss the Class Golden time



Consequences

Yellow / Red Card System for Y5 + Y6



1. Yellow Card 1: Loss of break / lunchtime break
2. Yellow Card 2: Loss of break and a phone call home
3. Red Card: Sent to LAST and phone call home
4. Meeting with parents and Class Teacher or LAST
5. On Report daily to HT or DHT until behaviour improves

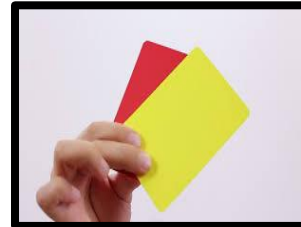


If you are issued with a yellow / red card

1. Collect your card, ready with an explanation
2. Return to class where your teacher will keep the cards
3. Yellow Card 1: Loss of break / lunchtime break (with a Member of staff)

Yellow Card 2: Loss of break + Phone call home

4. Red Card Sent to LAST - communication with parents by teachers/LAST
5. Cards are reset after a half term



Policy Review and Update:

This policy was reviewed in February 2024

All staff were made aware of the review of this policy in February 2024

This policy will be reviewed in February 2025

This policy was approved by the governing body on 14.03.24

Signed by Chair of Governors: _____